

COMPOOL® CONTROL SYSTEM REPLACEMENT PARTS



CON6



520008



AI101/AI201



CB3



520173



BAT3



LBL3800

Part No.	Description
CABLE CONNECTORS & ADAPTORS	
6CONDTEST	Test Cable, (6-Conductor)
520001	Adaptor 6-Conductor Flat To Multiple-Pair Cable
520008	Splice 26-22 AWG Weather-Proof (100 Qty Per Bag)
CON6	Connectors For 6-Conductor Flat Cable (4 Qty)
9987013	Crimping Tool 6 Pin RJ-11 Telephone-Type Connector
8761047	Cable, PC Board Harness, 2 Cond. Red/Black W/Plugs
SCREW TERMINALS, CIRCUIT BOARD PLUG-IN TYPE, INTELLITOUCH	
8023302	Terminal Plug-In 2 Position
8023304	Terminal Plug-In 4 Position
8023306	Terminal Plug-In 6 Position
8023308	Terminal Plug-In 8 Position
8023310	Terminal Plug-In 10 Position
8023312	Terminal Plug-In 12 Position
BATTERIES, CIRCUIT BREAKERS, SURGE SUPPRESSORS	
AI101	Surge Suppressor (115V)
AI201	Surge Suppressor (230V)
BAT3	Battery, 3-Volt Lithium
CB3	Circuit Breaker (3 Amp)
FREEZE PROTECTION SENSORS (NOT FOR USE WITH CP3800 FAMILY)	
FP5AUX	Auxiliary Pump Freeze Sensor
FPSC	Filter Pump Freeze Sensor
EQUIPMENT IDENTIFICATION LABELS	
LBL100	Label Set For CP100 Indoor Control Panel
520124	Label Set For QuickTouch Wireless Remote
520173	Label Set For is4 Spa-Side Remote
LBL3800	Label Set For Indoor Control Panel CP3800 Family

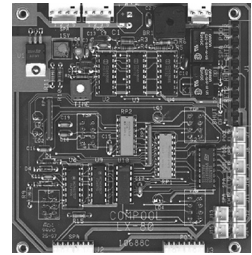
COMPOOL® CONTROL SYSTEM REPLACEMENT PARTS (CONT'D)

Part No.	Description
POWER CENTER HARDWARE (BLACK PLASTIC ENCLOSURE)	
LXLATCH	Latch, For Door
LXLID2	Lid, Latching Enclosure
LXPIN	Hinge Pins For Interior Faceplate, Set Of 2
ENCLLX	Enclosure For Power Center
FKNOBG	Thermostat Knob
520006	Dead Panel, High Voltage
9541143	Enclosure - CP3** Cover/Base/Doors
POWER CENTER (BLACK PLASTIC ENCLOSURE)	
LX820	Emergency Shut-Off Controller/ Power Center
LOAD CENTER HARDWARE (ALMOND STEEL ENCLOSURE)	
520005	Latch For Cover Enclosure-For Load Center
ENCLLC	Enclosure Power Center w/Sub-Panel
520006	Dead Panel, High Voltage
CIRCUIT BOARDS FOR INDOOR CONTROL PANELS	
PCCP100	Circuit Board For CP100 #11057
CIRCUIT BOARDS FOR POWER CENTERS AND RF RECEIVERS	
MODESO	Module For ESO-2 Emergency Shut-Off Switch #11111
MODSOL	Module, Temperature Control For LX80 #10689
PCLX100	Circuit Board For LX100 #11056
PCLX220	Circuit Board For LX220 #10809
PCLX3600	Circuit Board For LX3600 #11095
PCLX80	Circuit Board For LX80 #10688
PCLX820	Circuit Board For LX820 #10853
520168	Circuit Board For EZ100 Or LX100EZ Radio Receiver
520169	Circuit Board For EZ3400 Radio Receiver
RELAYS AND RELAY ACCESSORIES	
RLYHTR	Heater Relay Repair Kit
RLYLX	Relay Kit, 20 Amp
RLYLX3HP	Additional 25 Amp, 3 HP Power Relay (For Auxiliary Equipment)
RLYLXD	Relay Kit For 2-Speed Pump
RLYNC	Relay Kit 20 Amp (DPDT) For Special Applications Only
RLYSC	Relay Kit For LX220 & LX820, 20 Amp
RLYSC3HP	25 Amp, 3 HP Power Relay For LX220 And LX820 Systems
RYALX	Adapter, 2 Relays Controlled By 1 Circuit
CRALX	Adapter, 1 Relay Controlled By 2 Circuits
520403	Dual Heater Relay Kit
OUTDOOR REMOTES FOR CP3800 FAMILY OR SYSTEMS (FULL FUNCTION)	
520345	is10 for CP3800 Family Includes 6Cond Adapter1

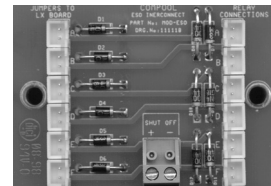
SWITCHES	
6010102	On/Off Switch for CP30 Remote Panel, 2 Position
6010103	On/Off/On Switch For CP30 Remote Panel, 3 Position
ES02	Shut-Off Switch with Alarm, Double Gang Plate
RCS1	Spa Jets Switch, Wall Mount, Single Gang Plate



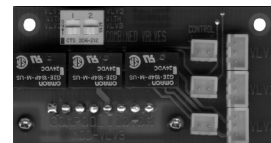
MODSOL



PCLX80



MODESO



MODVLV3



RLYLXD



RLYLX



520168



ES02



RLYHTR



RLYSC

COMPOOL® CONTROL SYSTEM REPLACEMENT PARTS



6870002



520002



TMRLX



XFM1BK



XFM3BK



XFM20

Part No.	Description
SPA-SIDE AND WIRELESS REMOTES	
520173	Label Set, Pack Of 10 For is4 Spa-Side Remote
520124	Label Set, Pack Of 10 For QuickTouch Wireless
TELEPHONE REMOTE CONTROL (FOR CP3800 FAMILY)	
6870002	Module For Telephone Remote Control
PERSONAL COMPUTER INTERFACE	
520002	Module RS232 To RS485 Converter for CP3800 Family Only
TIMERS	
TMRLX	Timer, 24 Hour Mechanical
TEMPERATURE SENSORS	
TS5L	Temp Sensor Linear (Red & Green Wires) Compool
520272	Temp Sensor, Thermistor (Red & Black Wires) IntelliTouch
9142109	O-Ring, 5/16 In. for Temperature Sensor
9321004	Clamp for Water Temperature Sensor
VALVE ACTUATORS AND PARTS	
263045	CVA-24T Valve Actuator, 24 Volt AC, 180 Degree Rotation
263044	CVA-24Y Valve Actuator, 24 Volt AC, 120 Degree Rotation
263043	CVA-24L Valve Actuator, 24 Volt AC, 90 Degree Rotation
270078	Circuit Board w/Selector Switch
270077	Gear Set for CVA-24; Set Of 3
4231033	Motor For CVA-24
CVASCR	Mounting Screws (4) For CVA-24 To Compool Valve
CVASCRJ	Mounting Screws (4) For CVA-24 To Pacfab Valve
520010	Micro-Switch Set (2) With Levers & Screws For CVA-24
PIG3	Pigtail Harness W/Circuit Board Connector
SK5V	Shaft Coupling CVA-24 To Ortega Valve
OVA2	Adapter Kit, CVA-24T To Ortega Valve, 2 In.
TRANSFORMERS	
XFM1BK	Transformer Assembly For LX20, LX30, LX36 & LX80
XFM3BK	Transformer Assembly For CP3800 Family
XFM20	Transformer Assembly For LX120, LX220, LX420 & LX820