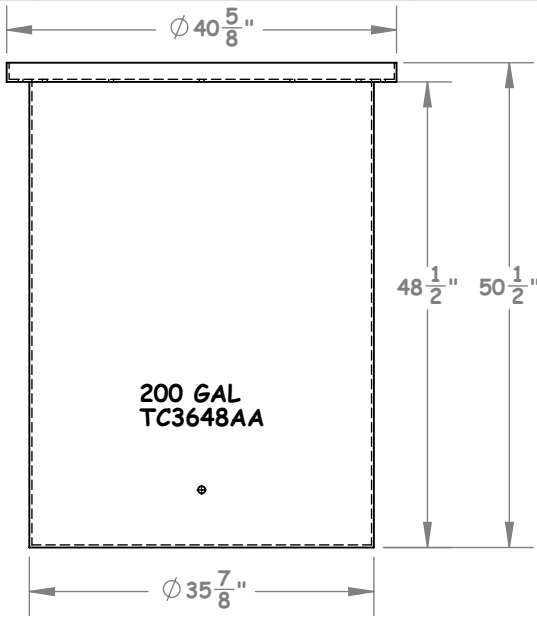
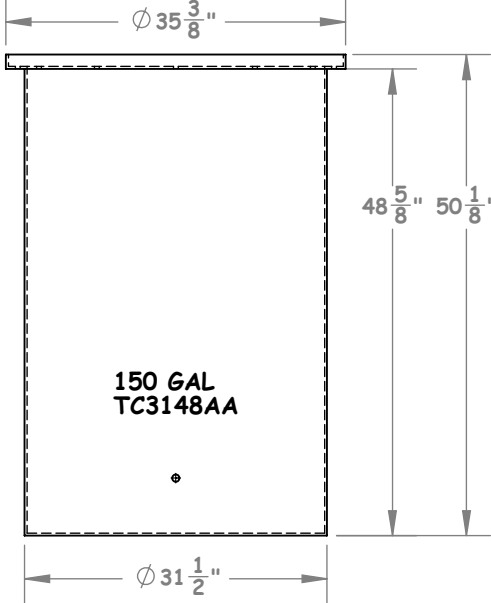
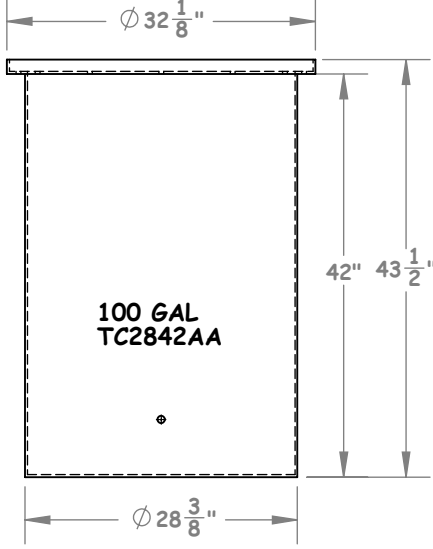
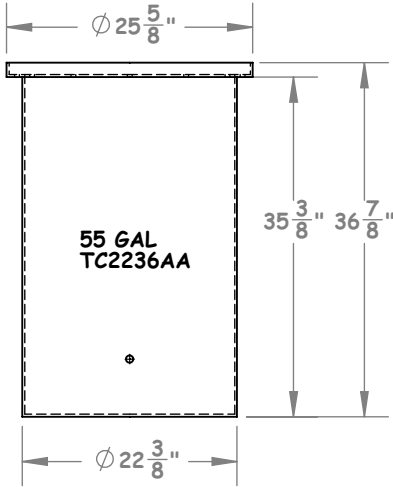
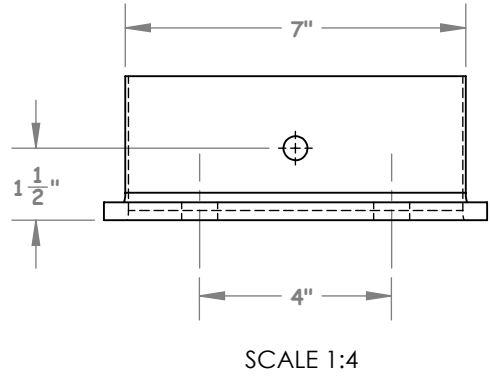
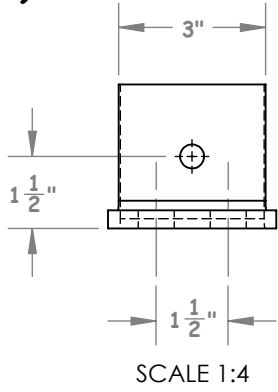
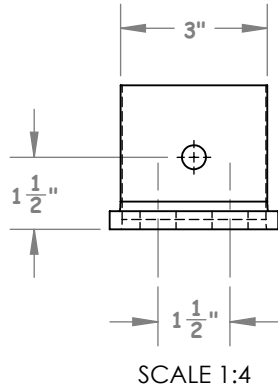
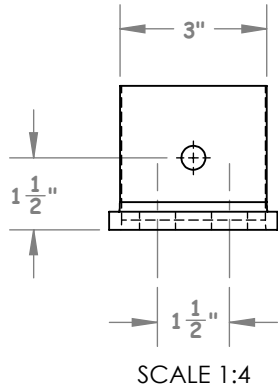


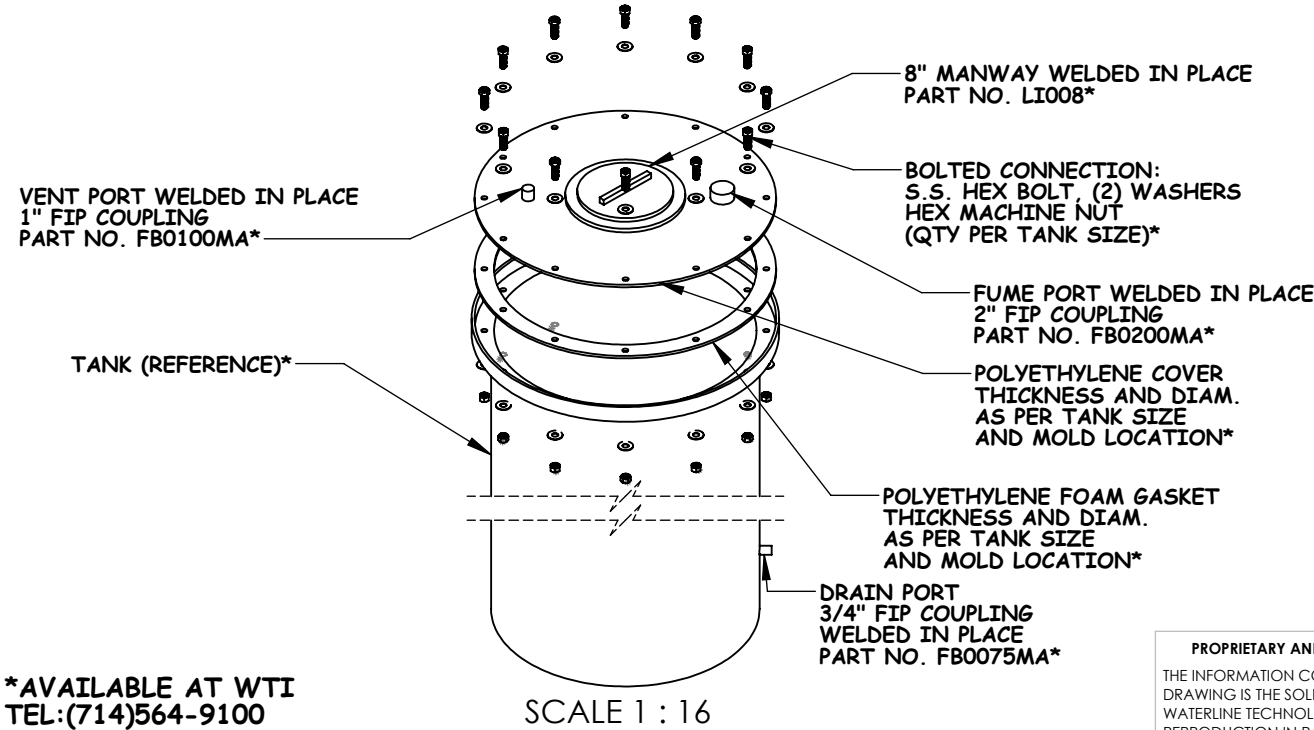
FUME SUPPRESION TANKS:



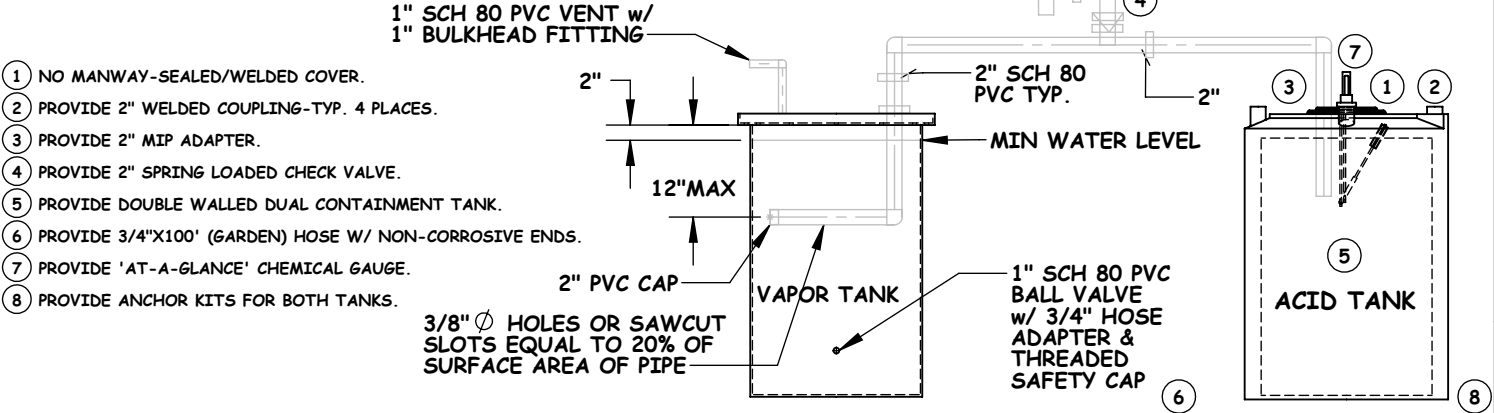
CORRESPONDING MOUNTING BRACKETS (3" X 3" X 1/2" S.S. L CHANNEL RADIAL ANCHORS):



ASSEMBLY DIAGRAM:



VAPOR RECOVERY PIPING:



- 1 NO MANWAY-SEALED/WELDED COVER.
- 2 PROVIDE 2" WELDED COUPLING-TYP. 4 PLACES.
- 3 PROVIDE 2" MIP ADAPTER.
- 4 PROVIDE 2" SPRING LOADED CHECK VALVE.
- 5 PROVIDE DOUBLE WALLED DUAL CONTAINMENT TANK.
- 6 PROVIDE 3/4"X100' (GARDEN) HOSE W/ NON-CORROSIVE ENDS.
- 7 PROVIDE 'AT-A-GLANCE' CHEMICAL GAUGE.
- 8 PROVIDE ANCHOR KITS FOR BOTH TANKS.

*AVAILABLE AT WTI
TEL:(714)564-9100

PROPRIETARY AND CONFIDENTIAL
THE INFORMATION CONTAINED IN THIS DRAWING IS THE SOLE PROPERTY OF WATERLINE TECHNOLOGIES. ANY REPRODUCTION IN PART OR AS A WHOLE WITHOUT THE WRITTEN PERMISSION OF WATERLINE TECHNOLOGIES IS PROHIBITED.

		UNLESS OTHERWISE SPECIFIED:		NAME	DATE	WATERLINE TECHNOLOGIES	
		DIMENSIONS ARE IN INCHES TOLERANCES: FRACTIONAL ± ANGULAR: MACH ± BEND ± TWO PLACE DECIMAL ± THREE PLACE DECIMAL ±		DRAWN	SS	3/9/16	TITLE: AVAILABLE AT WTI TEL: (714)564-9100
		INTERPRET GEOMETRIC TOLERANCING PER:		CHECKED			
		MATERIAL		ENG APPR.			
		FINISH		MFG APPR.			
NEXT ASSY	USED ON			Q.A.			SIZE DWG. NO. REV B Fume Suppression Tanks C
APPLICATION		DO NOT SCALE DRAWING		COMMENTS:			
							SCALE: 1:1 WEIGHT: SHEET 1 OF 1