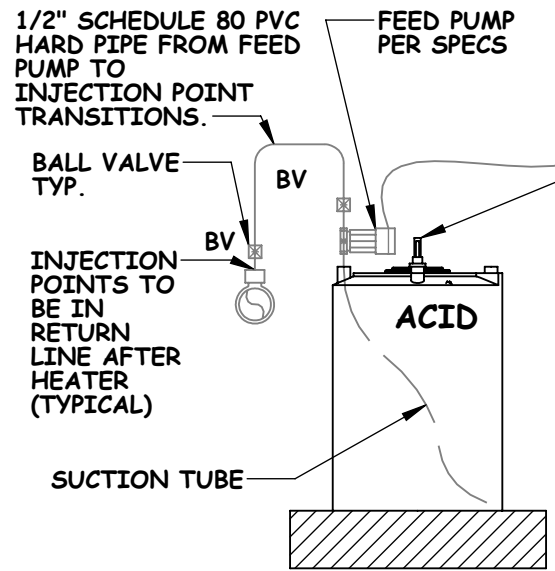


NOTE: ALL TANK WELDS TO BE FACTORY WELDED NO TANK ADAPTER/BULKHEAD FITTINGS ALLOWED.

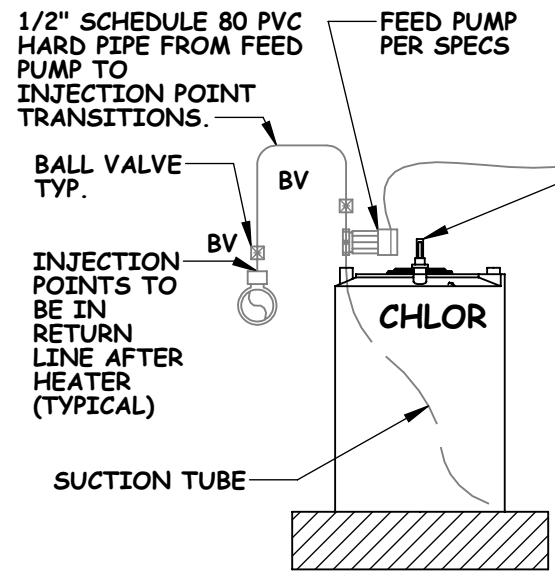
MAX WEIGHT CHART	DENSITY (lbs/gal)	MAX WEIGHT (lbs)
EMPTY TANK PART NO. TC3448DC	N/A	104
SODIUM HYPOCHLORITE	10	1500
30% HYDROCHLORIC ACID	9.6	1440
WATER	8.3	1245

**ACID TANK LID**  
\*AVAILABLE AT WTI, TEL:(714)564-9100

**CHLORINE TANK LID**  
\*AVAILABLE AT WTI, TEL:(714)564-9100



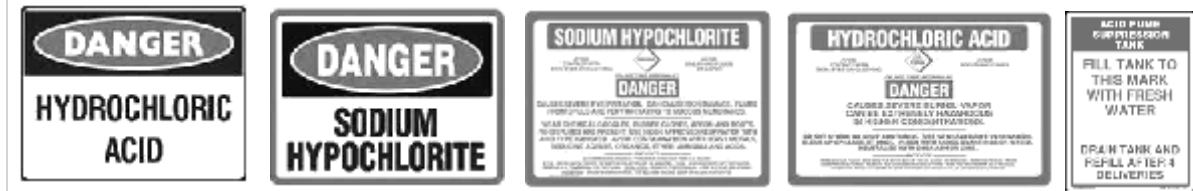
- NOTES:
1. ABOVE GROUND STATIONARY TANKS USED FOR THE STORAGE OF HAZARDOUS MATERIALS SHALL BE PLACARDED WITH HAZARD IDENTIFICATION SIGNS AS SPECIFIED IN C.F.C. STANDARD 79-3 FOR THE SPECIFIC MATERIAL CONTAINED. SIGNS SHALL BE DURABLE. THE SIZE, COLOR AND LETTERING SHALL BE IN ACCORDANCE WITH NATIONALLY RECOGNIZED STANDARDS.
  2. PIPING, TUBING, VALVES AND RELATED COMPONENTS SHALL BE SEISMICALLY BRACED.
  3. PIPING AND TUBING SHALL BE IDENTIFIED TO INDICATE THE MATERIAL CONVEYED.
  4. EMERGENCY SHUTOFF VALVES SHALL BE IDENTIFIED AND THE LOCATION SHALL BE CLEARLY VISIBLE AND INDICATED BY MEANS OF A SIGN.



- NOTES:
1. ABOVE GROUND STATIONARY TANKS USED FOR THE STORAGE OF HAZARDOUS MATERIALS SHALL BE PLACARDED WITH HAZARD IDENTIFICATION SIGNS AS SPECIFIED IN C.F.C. STANDARD 79-3 FOR THE SPECIFIC MATERIAL CONTAINED. SIGNS SHALL BE DURABLE. THE SIZE, COLOR AND LETTERING SHALL BE IN ACCORDANCE WITH NATIONALLY RECOGNIZED STANDARDS.
  2. PIPING, TUBING, VALVES AND RELATED COMPONENTS SHALL BE SEISMICALLY BRACED.
  3. PIPING AND TUBING SHALL BE IDENTIFIED TO INDICATE THE MATERIAL CONVEYED.
  4. EMERGENCY SHUTOFF VALVES SHALL BE IDENTIFIED AND THE LOCATION SHALL BE CLEARLY VISIBLE AND INDICATED BY MEANS OF A SIGN.

**HYDROCHLORIC ACID FEED SCHEMATIC**  
\*AVAILABLE AT WTI, TEL:(714)564-9100

**SODIUM HYPOCHLORITE FEED SCHEMATIC**  
\*AVAILABLE AT WTI, TEL:(714)564-9100



**HAZARDOUS SIGNAGE**  
\*AVAILABLE AT WTI, TEL:(714)564-9100

**PROPRIETARY AND CONFIDENTIAL**  
THE INFORMATION CONTAINED IN THIS DRAWING IS THE SOLE PROPERTY OF WATERLINE TECHNOLOGIES. ANY REPRODUCTION IN PART OR AS A WHOLE WITHOUT THE WRITTEN PERMISSION OF WATERLINE TECHNOLOGIES IS PROHIBITED.

UNLESS OTHERWISE SPECIFIED:		NAME	DATE	WATERLINE TECHNOLOGIES
DIMENSIONS ARE IN INCHES TOLERANCES: FRACTIONAL ± ANGULAR: MACH ± BEND ± TWO PLACE DECIMAL ± THREE PLACE DECIMAL ±		SS	3/9/16	
INTERPRET GEOMETRIC TOLERANCING PER:		DRAWN		TITLE:
MATERIAL		CHECKED		
FINISH		ENG APPR.		TC3448DC
DO NOT SCALE DRAWING		MFG APPR.		
NEXT ASSY	USED ON	Q.A.		SIZE
APPLICATION		COMMENTS:		DWG. NO.
				150 Gal Tank D
				REV
				SCALE: 1:25 WEIGHT:
				SHEET 1 OF 1