

Chemtrol® PC3000

PROGRAMMABLE CONTROLLER

AUTOMATED WATER TREATMENT
with Duplex Remote Control
and Probe Alert™ Safeguard*

* U.S. Patent 5,895,565

The **CHEMTROL® PC3000** microprocessor-based programmable controller with full remote operation capability introduces a new standard of sophistication in automated water treatment for many applications such as swimming pools, spas, waterparks and industrial water treatment.

STANDARD FEATURES

- ✓ **ORP CONTROL** of oxidizer with shock and chemical saving programs,
- ✓ **Sanitizer PPM DISPLAY** from ORP and pH,
- ✓ **pH CONTROL** with acid / base feed and probe rinse program,
- ✓ **HEATER CONTROL** with energy saver program,
- ✓ **LANGELIER SATURATION INDEX** for water balance,
- ✓ **AUTOMATIC DATA LOGGING** for up to 999 tests,
- ✓ **FULL SCREEN MENUS** in English, French or Spanish,
- ✓ Screen displays in **US** or **METRIC UNITS**,
- ✓ **COMPATIBLE** with all **COMMON SANITIZERS, OXIDIZERS,** and **AUTOMATED CHLORAMINE TREATMENT (A.C.T.) PROGRAM.**

OPTIONS

- ✓ Solid State **FREE CHLORINE SENSOR** for monitoring and control,
- ✓ **CONDUCTIVITY / Total Dissolved Solids (TDS) CONTROL** with autofill capability for salt generators,
- ✓ **WATER LEVEL CONTROL** with electronic sensor and fill valve control,
- ✓ **MAIN PUMP CONTROL** and **FLOW RATE** with cumulative display,
- ✓ **INFLUENT/EFFLUENT PRESSURES** monitoring with safety alarms,
- ✓ **REMOTE COMPUTER OPERATION** and **GRAPHIC DATA DISPLAY,**
- ✓ **ETHERNET** and **INTERNET** communication,
- ✓ **MODBUS** communication to Building Management Systems,
- ✓ **4-20 mA** five-channel output to Building Management Systems,
- ✓ **VOICE TELEPHONE** communication.

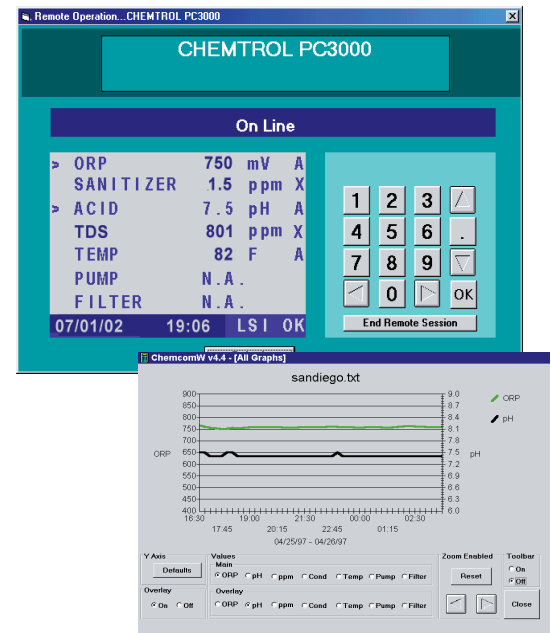
SIMPLE AND RELIABLE

The **CHEMTROL® PC3000** is a user-friendly and reliable controller that is easy to install and operate. All menus are displayed in English, French or Spanish with choice of US or metric units. Each unit is supplied with a comprehensive operation manual, on-site startup and training by a Qualified Dealer and a **FIVE-YEAR electronics warranty.**

EXTENDED TECHNICAL SUPPORT

Technical support from **CHEMTROL®** is based on our experience with over 30,000 installations worldwide. It is also available by toll-free phone, by fax or by e-mail.

- the **CHEMCOM™** Program for *Windows™* allows **immediate technical support** from our Service Department or from a Qualified Dealer by remote computer with true duplex operation.
- the patented **Probe Alert Safeguard*** constantly monitors the response of the ORP and pH probes and alerts the operator in case of probe failure.



**REMOTE COMPUTER
OPERATION and GRAPHIC DATA
DISPLAY**
under *Windows*

Visit our Web Site at www.sbcontrol.com or call today for a free demo CD.



SANTA BARBARA CONTROL SYSTEMS

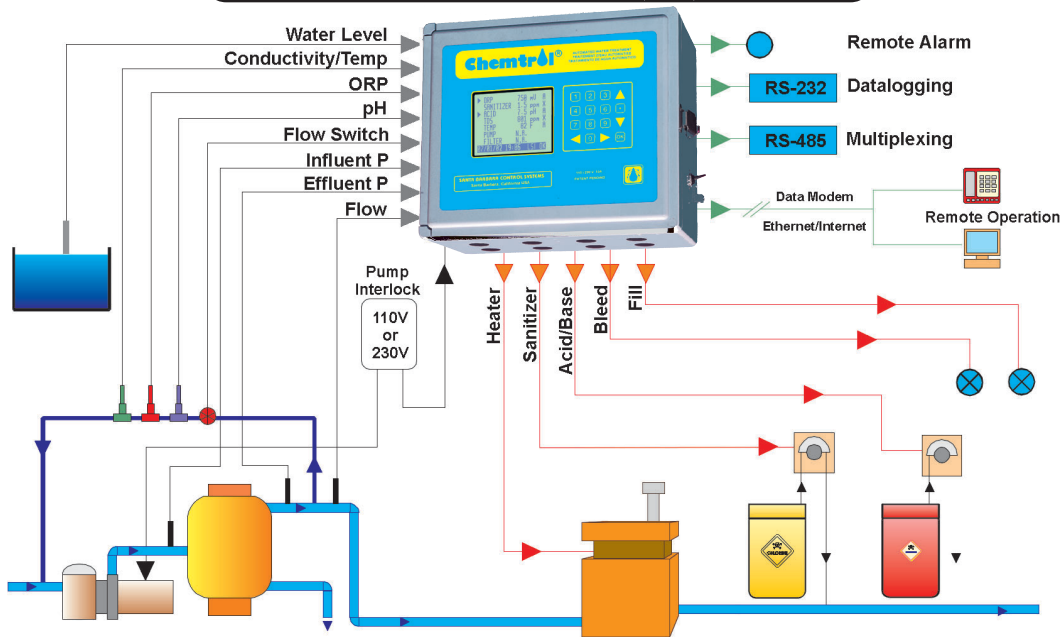
5375 Overpass Road
Santa Barbara, CA 93111 - USA

TOLL-FREE
PHONE
FAX
INTERNET

800-621-2279
805-683-8833
805-683-1893
www.sbcontrol.com

Leading in Automated Water Treatment Since 1976

POOL/SPA INSTALLATION



SPECIFICATIONS

SCREEN DISPLAY	8 lines @ 22 characters
ORP	200-999 mV with oxidizer and/or reducer Programmable shock treatment and chemical saving cycles
pH	0-14 with acid and/or base feed
SANITIZER	0-10 ppm (mg/l)
CONDUCTIVITY / TDS	0-20,000 µS/cm conversion factor for TDS
TEMPERATURE	0 to 140 F (-18 to 60C)
LANGELIER INDEX	calculated from pH, Temp, total alkalinity and calcium hardness water balance display
SENSOR CALIBRATION	1, 2 or 3 points
CONTROL MODES	Off, Manual, Auto, Timer ON/OFF or Proportional Feed
ALARMS	High/Low out-of-range Total feed time and Overfeed Patented Probe Alert* Safeguard Visual, audio and external alarms
DATA LOGGING	On-board memory for 999 tests RS232 communication port for local download and printing
REMOTE OPERATION	Data communication modem Ethernet/Internet modem CHEMCOM™ remote software and graphical display under Windows™ Telephone voice communication
MULTIPLEXING	RS485 port for multiple connections
MECHANICAL	13 x 11 x 6 1/2 in. (34 x 29 x 17 cm) Rain and splatter proof NEMA Type 4X
ELECTRICAL	10 A / 110 or 230 V with selector switch All output relays 5 A
WARRANTY	5-year electronics 1-year sensors
SHIPPING	19 x 19 x 11" (48 x 48 x 28 cm) carton Weight: 21 lbs (9.5 kg)

MODEL SELECTION

STANDARD FEATURES

- ✓ ORP CONTROL
- ✓ SANITIZER PPM DISPLAY
- ✓ pH CONTROL
- ✓ HEATER CONTROL
- ✓ LANGELIER SATURATION INDEX
- ✓ AUTOMATIC DATA LOGGING
- ✓ REMOTE ALARM
- ✓ RS232 FOR DIRECT DOWNLOAD
- ✓ BYPASS LINE ASSY or FLOW CELL ASSY with Safety Flow Switch

OPTIONS

- FREE CHLORINE SENSOR WITH MONITORING AND CONTROL
- CONDUCTIVITY/TDS CONTROL WITH AUTOFILL FOR CHLORINE SALT GENERATORS
- FLOW RATE MONITORING
- AUTOMATIC WATER LEVEL CONTROL
- RECIRCULATION PUMP CONTROL
- INFLUENT/EFFLUENT PRESSURE MONITORING
- AUTOMATIC FILTER BACKWASH
- RS485 FOR MULTIPLEXING
- REMOTE COMPUTER OPERATION
- ETHERNET / INTERNET / WIRELESS OPERATION
- MODBUS COMMUNICATION TO B.M.S.
- 4-20mA FIVE-CHANNEL COMMUNICATIONS FOR B.M.S. MONITORING AND CONTROL
- VOICE TELEPHONE COMMUNICATION

REPRESENTED BY: