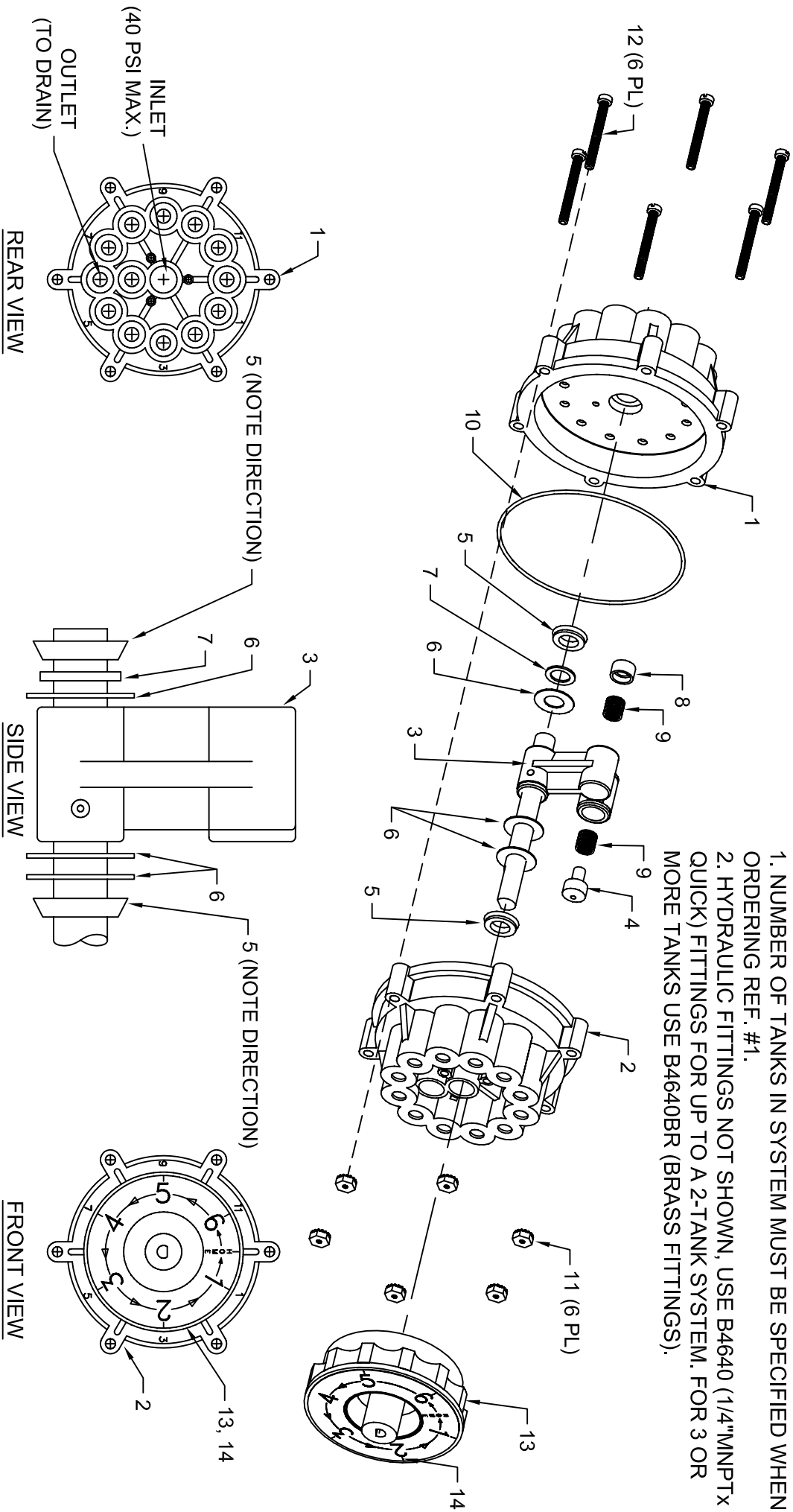


NOTE:
 1. NUMBER OF TANKS IN SYSTEM MUST BE SPECIFIED WHEN ORDERING REF. #1.
 2. HYDRAULIC FITTINGS NOT SHOWN, USE B4640 (1/4"MNPTX QUICK) FITTINGS FOR UP TO A 2-TANK SYSTEM. FOR 3 OR MORE TANKS USE B4640BR (BRASS FITTINGS).



Ref. Qty.	Part No.	Name or Description
1	B4702-XX	HOUSING, MACHINED AND DRILLED
2	B4841A	HOUSING, MULTIPORT
3	B4703	SHAFT/DISTRIBUTOR SUB ASSEMBLY
4	B4841D	*DETENT PIN, MULTIPORT
5	B4708	*LIP SEAL

Ref. Qty.	Part No.	Name or Description
6	B4709	*WASHER, NYLON, 3/4" OD
7	B4716	*WASHER, NYLON, 9/16" OD
8	B4710	*CUP SEAL
9	B4711	*SPRING, MULTIPORT
10	B4707	*O-RING, MULTIPORT

Ref. Qty.	Part No.	Name or Description
11	94111	KEPS NUT, #8-32UNC, T316 S/S
12	94108	SCREW, #8-32UNC x 1-1/2", T316 S/S
13	B4712	CAM KNOB, GROUND
14	B4713	LABEL, MULTIPORT VALVE
15	A/R *****	**LUBRICANT, NON-PETROLEUM BASE

*PARTS INCLUDED IN MULTIPORT REBUILD KIT (PART NUMBER MV250KIT)
 **USE FLUORINATED OR TEFLON BASED LUBRICANT ON ALL SEALS AND O-RINGS.

This data represents the latest knowledge available to us at time of presentation. However Paragon Aquatics and others involved in gathering and presenting this drawing assume no liability for its use.

© 2010 Paragon Aquatics



Drawn by:	Date:	Title:	Rev Ltr:	Sheet:
JP	4/23/02	MULTIPORT VALVE ASSEMBLY DRAWING	G	1 of 1
Approved by:	Date:	Drawing Number:		
JP	4/23/02	AI-MV250		