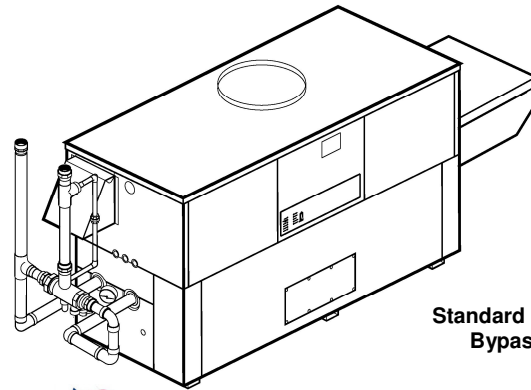


Job: _____
 Engineer: _____
 Contractor: _____
 Prepared By: _____ Date: _____
 Model: _____ Indoor/Outdoor: _____ MBTUH Input: _____

Hi Delta® - Type P

Commercial Pool Heaters
 Models 502C-902C

- ♦ 100% Factory Fire Tested
- ♦ Thermal Efficiency: 85%
- ♦ Versa IC® Controller with LCD Display
- ♦ Maximum Setpoint: 106°F (104°F Default)
- ♦ Maximum Outlet Temperature: 160°F
- ♦ Minimum Non-Condensing Inlet Temperature: 105°F
- ♦ Thermal Shock Proof Heat Exchanger
- ♦ Limited Twenty-Year Thermal Shock Warranty
- ♦ Limited Five-Year Heat Exchanger Warranty
- ♦ Full Safety Diagnostics with Fault History
- ♦ PolyTuf Powder Coated Cabinet
- ♦ No Combustible Floor Shield Required
- ♦ Fan-Assisted
- ♦ Patented Burner Security Blanket
- ♦ Ultra-Low NOx – SCAQMD 1146.2 Certified
- ♦ Cascade Up To 4 Heaters – No External Sequencer Needed



Standard Sparcomatic Bypass Shown



Proudly Assembled in the USA

Heat Exchanger

- Brass Headers
- ASME Inspected and HLW Stamped
160 PSIG Working Pressure
- National Board Approved
- Cupro-Nickel Finned Tubing
- ASME Steel Tube Sheet
- Silicone High-Temp O-Rings
- 125 PSIG ASME Pressure Relief Valve
- Temperature and Pressure Gauge
- Water Connections
 - Left – Standard
 - A-6 – Right
- Bronze Pump, 1/2 HP, 120V, 60Hz
- Non-ferrous Pool Bypass Assembly with Automatic Control

Controls

- 120V, 60Hz, 1Ø Power Supply
- 120/24V 60Hz Transformer
- Versa IC® Integrated Control
- Cascade up to 4 Heaters
- 100% Shut-Off/Lockout
- Hot Surface Ignition
- Ignition Module
 - 3-Try – Standard
 - C-6 Single Try
- Remote Flame Sensor
- Fixed High Limit, Manual Reset 240°F
- On/Off Power Switch
- Flow Switch
- Blocked Vent Pressure Switch
- Combustion Air Proving Switch
- Programmable Pump Time Delays
 - Heater
 - System
- Enable/Disable
- LCD Display; Status, Fault and Diagnostics

- Cold Water Protection Function
 - CWR Variable-Speed Pump
 - Default Sparcomatic Bypass
- Modbus RTU BMS Port (Up to 115K Baud Rate, See Cat. 5000.73)
 - B-85 – BMS Gateway – BACnet MS/TP, BACnet IP, N2 Metasys or Modbus TCP
 - B-86 – BMS Gateway - LonWorks

Gas Train

- Combination Valves
- On/Off Firing
- Fuel
 - Natural Gas
 - Propane Gas (HD-5)
 - G – 20 4" WC Nat. Supply
- Design Certified ANZI Z21.56/CSA 4.7

Burner

- Ultra-low NOx:
Less than 20 PPM

Construction

- Indoor/Outdoor Construction
- Enclosed Front Controls
- PolyTuf Powder Coat Finish
- CSA Low Lead Certified ≤ .25% Lead

Venting

- Vent Location
 - Top – Standard
 - D – 14 Rear
- Vent Termination Cap
 - D – 11 Outdoor
 - D – 15 Indoor
 - Indoor, Vertical (by others)
- Combustion Air
 - D – 17 In-Line Filter Kit (TruSeal only)
 - D – 16 Air Intake Elbow

- Extractor - Optional
 - By Others
 - Not Required

Options

- C-6 Ignition Module, Manual Reset
- D-21 TruSeal® Direct Vent
 - Left Side - Standard
 - Right Side - Optional
- F-10 Low Water Cut-Off, Remote Probe
- S-1 Low Gas Pressure Switch, Manual Reset
- S-2 High Gas Pressure Switch, Manual Reset
- X-1 SureRack® Kit (Lower Unit Requires Manifold Modification)
- X-2 SureRack Add-On (Lower Unit Requires Manifold Modification)

Additional Options or Accessories

Multi-Heater Controllers

- B-36, 2 – 4 Heaters
- B-37, 5 – 10 Heaters
- B-38, 11 – 16 Heaters
- B-39, EMS 4-20mA Remote Setpoint Module
- B-62, BACnet MS/TP Interface



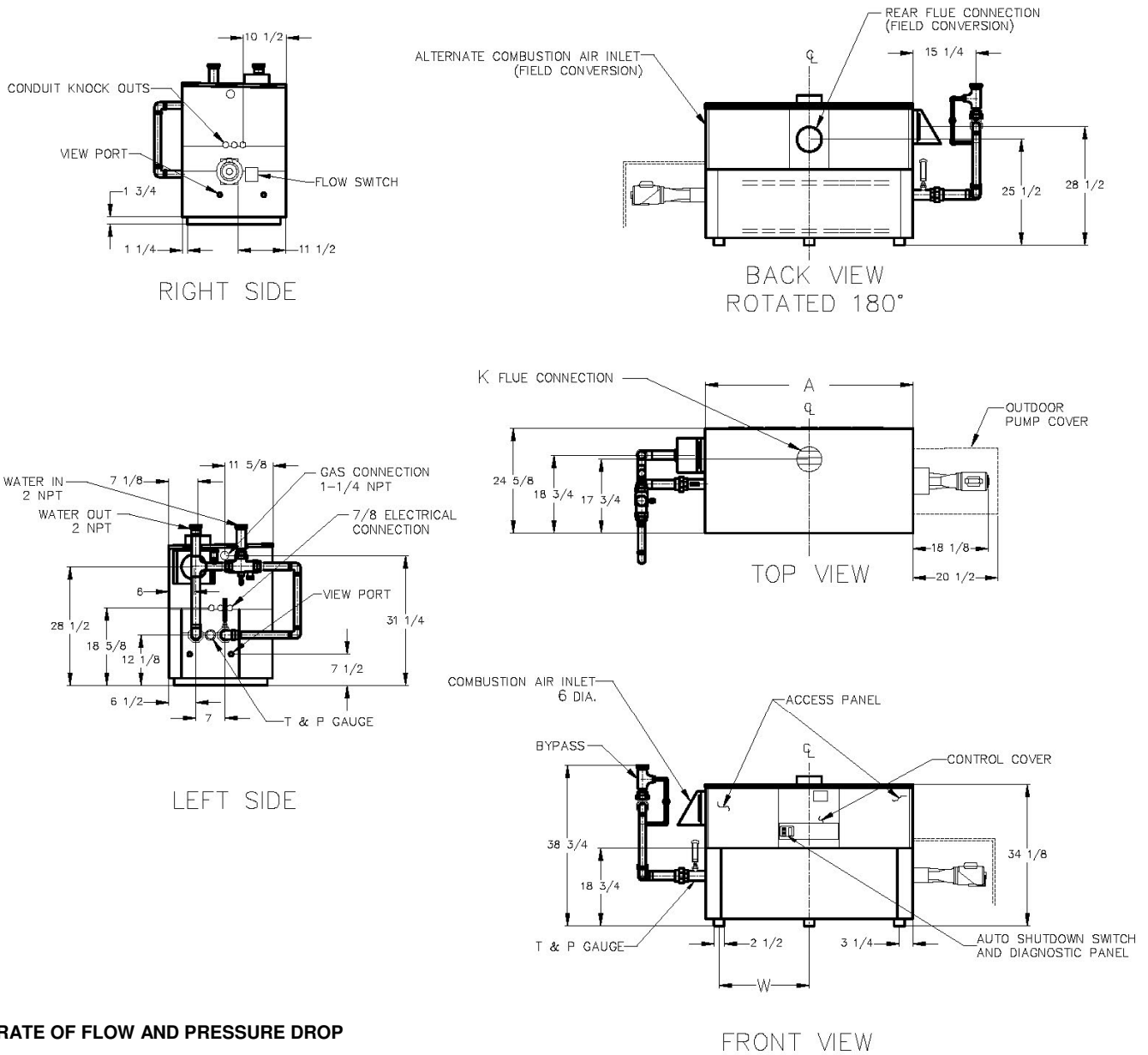
Raypak®

A Rheem® Company

Hi Delta – Type P

Models 502C – 902C (“Sparcomatic” Bypass Option)

Model _____



RATE OF FLOW AND PRESSURE DROP

MODEL	Max. Flow		
	GPM	ΔT (ft.)	ΔT
□ 502C	90	10.5	10
□ 652C	90	10.7	12
□ 752C	90	11.0	14
□ 902C	90	11.8	17

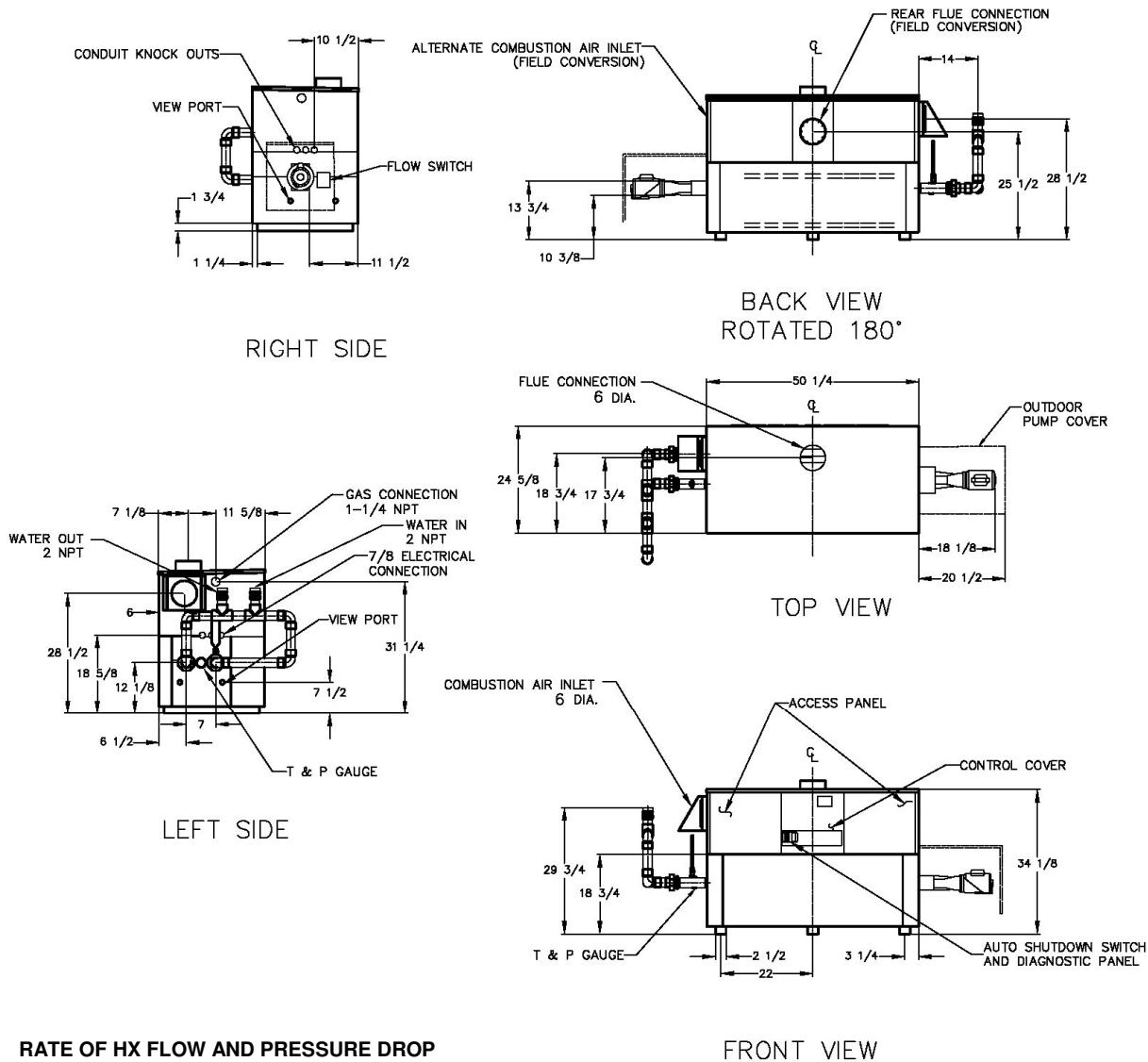
Model	MBTUH		A Width	K	W	Amp Draw (w/ Pump)	Shipping Weight (Lbs.)
	Input	Output					
□ 502C	500	425	50	6	22	13	545
□ 652C	650	553	60-1/2	8	27-1/4	13	590
□ 752C	750	638	67-1/2	8	30-3/4	13	675
□ 902C	900	765	78	8	36	14	740

Dimensions are in inches.
Ratings shown are for elevations up to 4,500 feet and for natural or propane gas.
For installation at elevations over 4,500 feet, please contact manufacturer.

Hi Delta – Type P

Models 502C – 902C (Cold Water Run Option)

Model _____



RATE OF HX FLOW AND PRESSURE DROP

Model	Max. Flow			
	GPM	ΔP (ft.)	ΔT	Injector Flow (GPM)
☐ 502C	90	10.5	10	22
☐ 652C	90	10.7	12	28
☐ 752C	90	11.0	14	32
☐ 902C	90	11.8	17	38

Model	MBTUH		A Width	K	W	Amp Draw Heater w/ Pump	Shipping Weight (Lbs.)
	Input	Output					
☐ P 502B	500	425	50	6	22	13	655
☐ P 652B	650	553	60-1/2	8	27-1/4	13	755
☐ P 752B	750	638	67-1/2	8	30-3/4	13	815
☐ P 902B	900	765	78	8	36	14	905

Dimensions are in inches.
 Ratings shown are for elevations up to 4,500 feet and for natural or propane gas.
 For installation at elevations over 4,500 feet, please contact manufacturer.

* Separate 120 VAC or 240 VAC 1Ø power required for Cold Water Run Option.
 Injector pump ships loose for field installation at bypass inlet.

Raypak, Inc. ▪ 2151 Eastman Avenue, Oxnard, CA 93030 ▪ (805) 278-5300 ▪ Fax (805) 872-9725 ▪ www.raypak.com

Catalog No.: 6000.323

Effective: 10-15-16

Replaces: NEW