

# Professional Indirect Pool Heater

Job: \_\_\_\_\_

Engineer: \_\_\_\_\_

Contractor: \_\_\_\_\_

Prepared By: \_\_\_\_\_ Date: \_\_\_\_\_

Model: \_\_\_\_\_ Indoor/Outdoor: \_\_\_\_\_

Powered by XTherm®  
1.0-1.5-2.0 MMBTUH Models

**96% Thermal Efficiency at Full Rate; Up to 99% at Part Load**

**VERSA IC® Modulating Controller**

**7 Inch HD Capacitive Color Touch Screen Display**

**Full Electronic Modulation, Constant Ratio 7:1 Turndown**

**Full Safety Diagnostics with History**

**PVC Venting**

**Modbus RTU BMS Port**

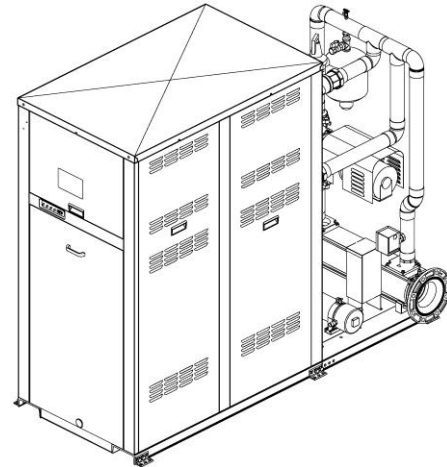
**Maximum Pool/Spa Water Temperature: 104°F**

**Limited Twenty-Five-Year Thermal Shock Warranty**

**Limited Ten-Year Primary Heat Exchanger Warranty**

**Limited Ten-Year Secondary**

**Limited 3/5-Year Indirect Heat Exchanger Warranty**



Proudly Assembled in the USA

## Heat Exchanger

- Headers
  - Cast Iron
- ASME H Stamped; 160 PSIG MAWP
- National Board Listed
- Fin Tubing
  - Copper – Standard
- ASME Powder-Coated Tube Sheet
- Silicone High-Temp O-Rings
- ASME Pressure Relief Valve
  - 30 PSIG – Standard
- Air Vent, Manual
- T&P Gauge
- Stainless Steel Secondary Heat Exchanger
- Stainless Steel Evaporator Plate
- Indirect Heat Exchanger
  - A-X Cupro-Nickel
  - A-X Titanium
- Boiler Pump: 120V, 1Ø, 60Hz
- Indirect Pump: 115/230V, 1Ø, 60Hz

## Control

- 120V, 60Hz, 1Ø, Power Supply
- 120/24V 60Hz Transformer
- Versa IC® Integrated Control
- Ignition Module
  - 3-Try – Standard
  - C-6 Single-Try
- Hot Surface Ignition (HSI)
- Remote Flame Sensor
- Adjustable Auto High Limit, 100-240°F
- Adjustable Manual High Limit, 200°F

- Low Water Cut-Off, Remote Probe
- Low Gas Pressure Switch, Manual Reset
- High Gas Pressure Switch, Manual Reset
- Low Water Pressure Switch
- On/Off Power Switch
- Flow Switch (2)
- Fixed Auto Limit – Pool Return
- Blocked Vent Pressure Switch
- Freeze Protection
- Alarm Dry Contact
- Programmable Pump Time Delays
- 7 Inch Color HD Touch Screen Display
- Water Temperature Sensors (4)
- Cold Water Protection – Built In
- Blocked Condensate Switch
- Modbus RTU BMS Port (Up to 115K Baud Rate, see Cat. No. 5000.73)
  - B-85 BMS Gateway, Modbus RTU to Modbus TCP, N2 Metasys, BACnet IP, or BACnet MS/TP
  - B-86 BMS Gateway, Modbus RTU to LonWorks

## Burner

- Radially-Fired Knitted Burner

## Gas Train

- Fuel
  - Natural Gas
  - Propane (HD-5)
- Dual-Seat Combination Valve
- Manual Shut-Off Firing Valve

- Electronic Modulation Firing Mode (H7-)

## Construction

- Indoor/Outdoor Construction
- Enclosed Front Controls
- PolyTuf Powder Coat Finish
- PVC Vent Adapter (Includes Manual Vent Limit)
- Mounted Condensate Treatment Kit
- Rear Connections (Water, Gas, Vent, Electrical, Comb. Air, Cond. Drain)
- Internal Combustion Air Filter
- Front Connection Low Voltage Wiring
- Indirect Pool Heat Exchanger
- Expansion Tank
- Manual Air Bleed Valve

## Venting

- Vent Termination, Cat IV

## Options

- E-15 Boiler Alarm Buzzer
- F- System Flow Switch
- M-1 Motorized Safety Valve

## Additional Options and Accessories

- \_\_\_\_\_

**Raypak**  
A Rheem® Company

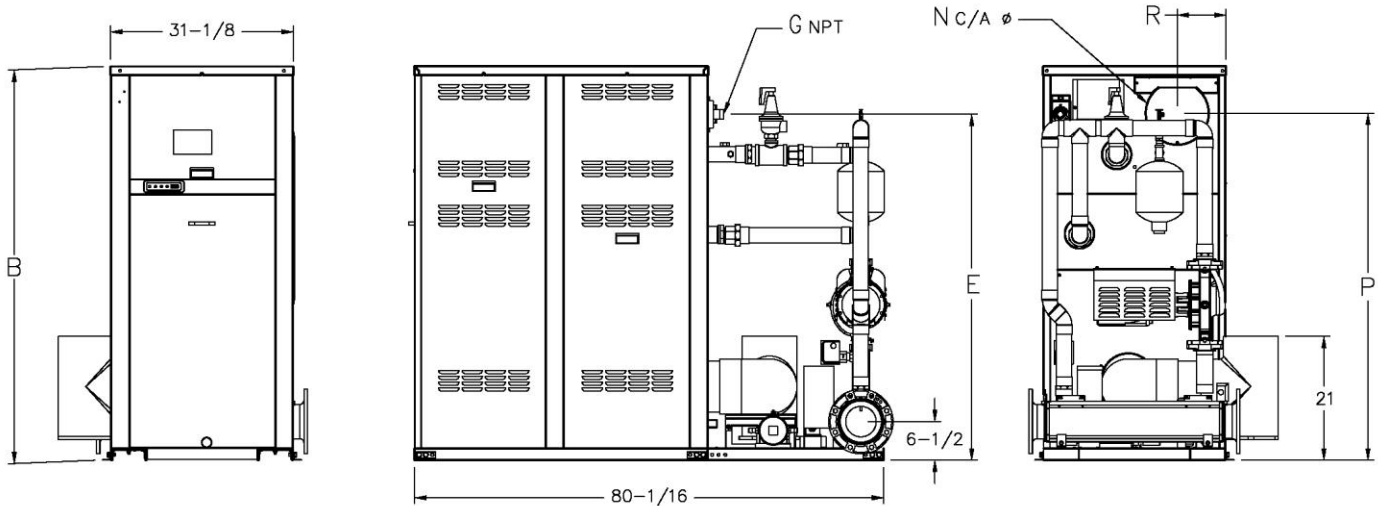
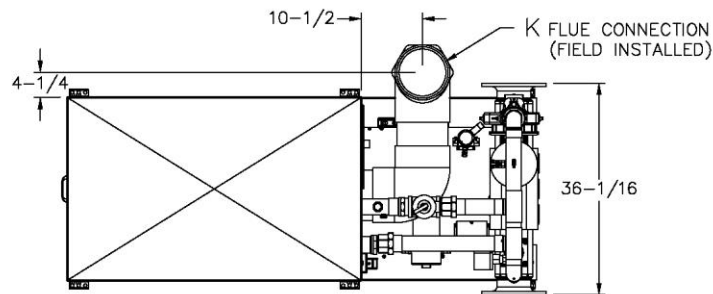
# Professional Indirect Pool Heater

Powered by XTherm®  
1.0-1.5-2.0 MMBTUH Models

Model: \_\_\_\_\_

### CLEARANCES (in.)

	Front	Rear	Right	Left	Top	Floor	Vent
<b>Certified Minimum</b>	24	12	1	1	0	0	1
<b>Minimum Service</b>	24	36	24	1	10	N/A	N/A



† Separate power connections are factory supplied and separate supply breakers must be field supplied.  
\*\* Current draw is for boiler only (Supply breaker must have delayed trip).

Model	Amp Draw** (120V)		
	Boiler †	Boiler Pump †	Indirect Pump †
1005A	12**	10	> 7
1505A	12**	14	10.8

Model (H7-)	MBTUH		Dimensions (in.)							Ship Weight (Lbs.)
	In	Out	B Height	E	G* NPT	K Flue Ø	N C/A Ø	P	R	
☐ 1005A	999	969	55-1/4	47	1-1/4	6	6	47-1/8	8-5/16	1343
☐ 1505A	1500	1455	67-1/8	59	1-1/4	8	8	59-1/8	8-3/16	1448

Note: Ratings are shown for elevations up to 4,500 feet. For installations at elevations Above 4,500 feet, please consult the factory for additional instructions.

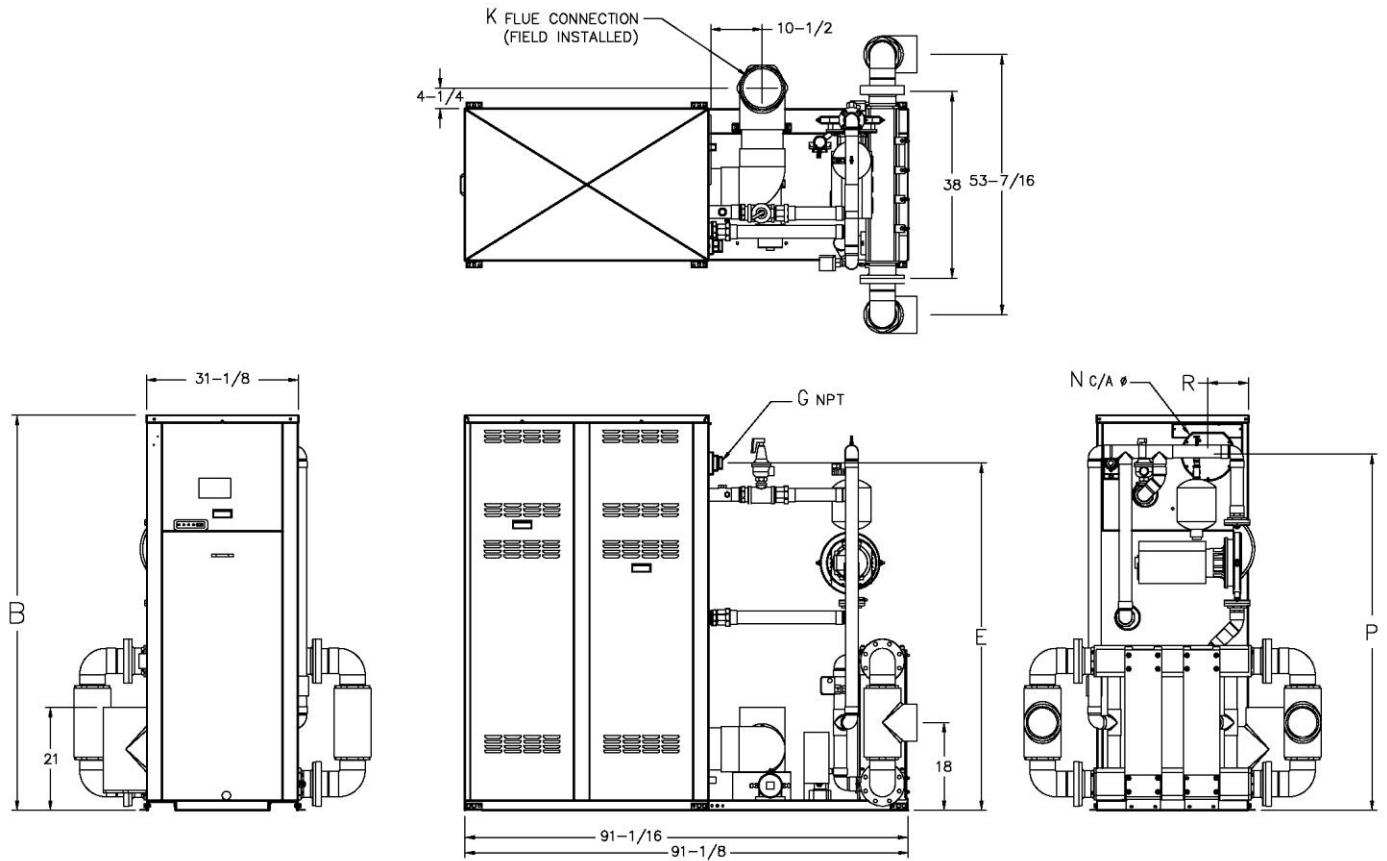
\* For Propane Gas, all models are 1" NPT.

# Professional Indirect Pool Heater

Powered by XTherm®

1.0-1.5-2.0 MMBTUH Models

Model: \_\_\_\_\_



† Separate power connections are factory supplied and separate supply breakers must be field supplied.  
 \*\* Current draw is for boiler only (Supply breaker must have delayed trip).

Model	Amp Draw** (120V)		
	Boiler †	Boiler Pump †	Indirect Pump †
2005A	12**	10	> 15

Model (H7-)	MBTUH		Dimensions (in.)							Ship Weight (Lbs.)
	In	Out	B Height	E	G* NPT	K Flue Ø	N C/A Ø	P	R	
☐ 2005A	1999	1939	81-1/8	72	2	8	8	73-1/8	8-3/16	1940

Note: Ratings are shown for elevations up to 4,500 feet. For installations at elevations Above 4,500 feet, please consult the factory for additional instructions.

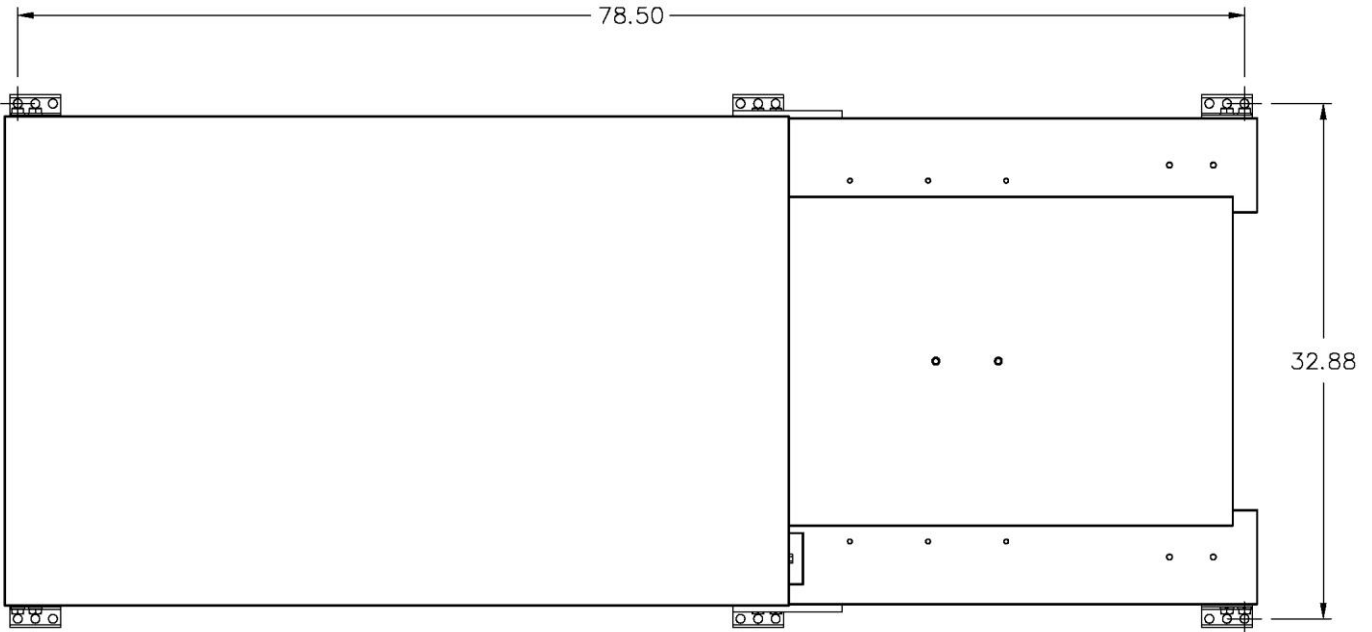
\* For Propane Gas, all models are 1" NPT.

# Professional Indirect Pool Heater

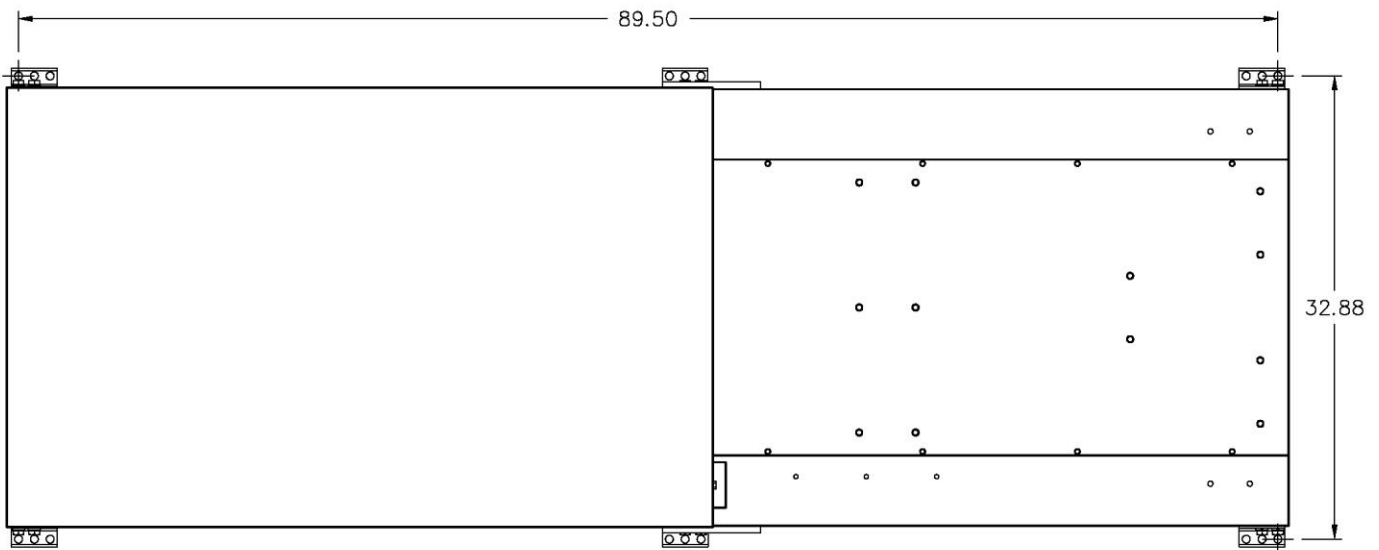
Powered by XTherm®  
1.0-1.5-2.0 MMBTUH Models

Model: \_\_\_\_\_

## Anchoring Details



## Models 1005A – 1505A



## Models 2005A