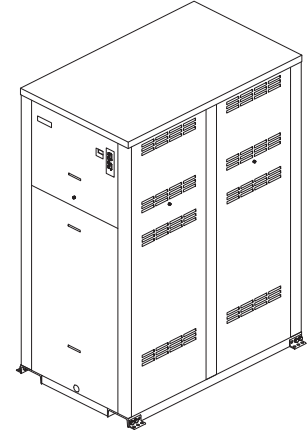



Job: _____
 Engineer: _____
 Contractor: _____
 Prepared By: _____ Date: _____
 Model: _____ Indoor/Outdoor: _____

XTherm® - Type P

Pool Heaters
 Models 1005A-2005A

- 97% Thermal Efficiency at Full Rate**
- 100% Factory Fire Tested**
- VERSA IC® Modulating Controller with LCD Display**
- Maximum Outlet Water Temperature: 160°F**
- Minimum Acceptable Inlet Water Temperature: 50°F**
- Full Safety Diagnostics with History**
- Status Display Lights**
- Cascade up to 4 heaters – No external sequencer needed**
- Limited Twenty-Five-Year Thermal Shock Warranty**
- Limited Five-Year Primary Heat Exchanger Warranty**
- Limited Ten-Year Condensing Heat Exchanger Warranty**
- On/Off Operation**



 Proudly Made in the USA

Heat Exchanger

- Bronze Headers
- ASME HLW Stamped; 160 PSIG MAWP
- National Board Listed
- Cupro Nickel Fin Tubing
- ASME Powder-Coated Tube Sheet
- Silicone High Temp O-Rings
- ASME Pressure Relief Valve 125 PSIG – Standard
- 150 PSI Air Vent, Auto
- T&P Gauge
- Stainless Steel Condensing Heat Exchanger
- Stainless Steel Evaporator Plate
- Boiler Pump: Bronze, 120V, 1Ø, 60Hz

Control

- 120V, 60Hz, 1Ø, Power Supply
- 120/24V 60Hz Transformer
- Ignition Module
 - 3-Try – Standard
 - Single-Try – Option C-6
- Hot Surface Ignition (HSI)
- Remote Flame Sensor
- High Limit Fixed Manual 180°F
- On/Off Power Switch
- Flow Switch
- Blocked Vent Pressure Switch
- Combustion Air Proving Switch
- Freeze Protection
- Pump Switch
- Alarm Dry Contact
- Pump Time Delay

Control (cont.)

- Blocked Condensate Switch
- Versa IC® Integrated Control
- Water Temperature Sensors (4)
- Cold Water Protection

Burner

- Ultra-Low NOx: Less than 20 PPM (Natural Gas Only)

Gas Train

- Fuel
 - Natural Gas
 - Propane
- Zero Governor Regulator
- Dual-Seat Combination Valve
- Electronic Firing Mode (P)

Construction

- Indoor/Outdoor Construction
- Front Controls Enclosed
- PolyTuf Powder Coat Finish
- Rear Connections (Water, Gas, Vent, Electrical, Comb. Air, Cond. Drain)
- Combustion Air Filter
- Design Certified ANSI Z21.56/CSA 4.3
- Front Connection Low Voltage Wiring
- CSA Low Lead Certified ≤ .25% Lead

Venting

- Vent Termination, Cat IV
 - Outdoor or Indoor, Vertical – Option D-11
 - Indoor, Horizontal – Option D-15
- Extractor – Optional, Cat II
 - By others
 - Not required

Multi-Heater Temp Controllers

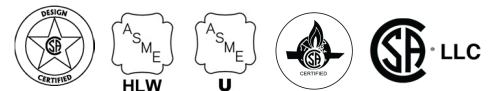
- B-36 TempTracker Mod+ Digital Controller 2 – 4 Heaters
- B-37 TempTracker Mod+ Digital Controller 5 – 10 Heaters
- B-38 TempTracker Mod+ Digital Controller 11 – 16 Heaters
- B-39 4-20 mA Remote Setpoint Module
- B-62 BACnet MS/TP Interface

Options

- D-32 PVC Vent Connection
- D-33 Polypropylene Vent Connection
- F-10 Low Water Cut-Off, Remote Probe
- I-5 High Limit, Manual Reset, Adj., 100-200°F
- S-1 Low Gas Pressure Switch, Manual Reset
- S-2 High Gas Pressure Switch, Manual Reset
- Z-12 Condensate Neutralizer Kit

Regulatory Agency Requirements

- _____



Raypak®
 A Rheem® Company

XTherm – Type P

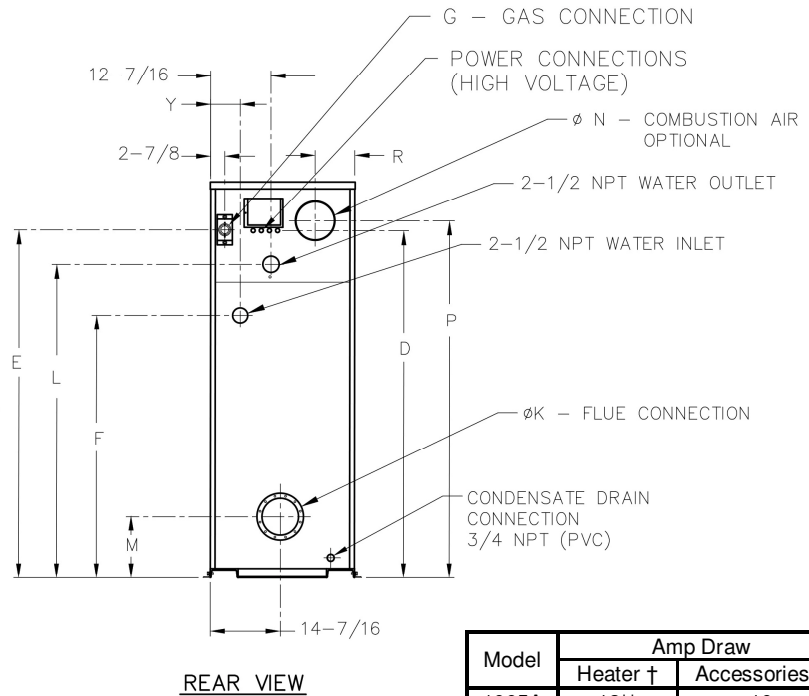
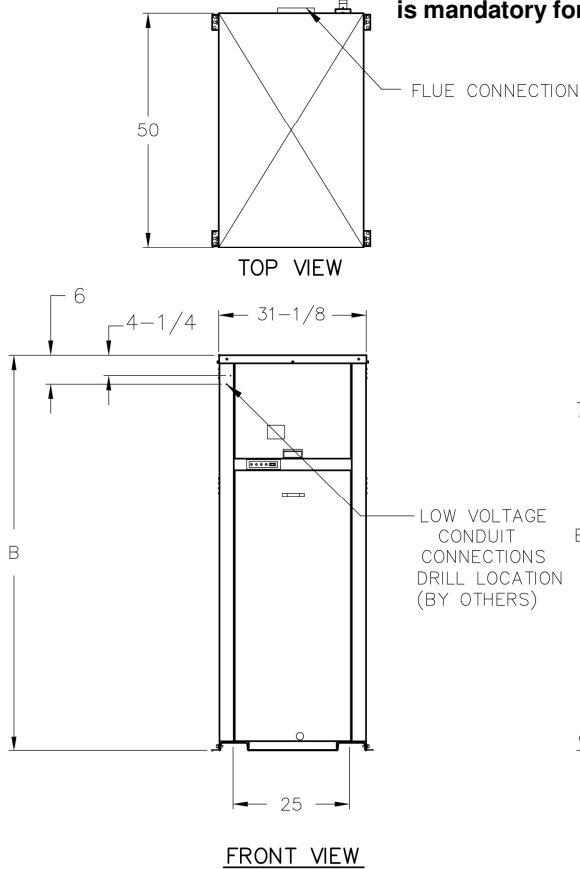
Models 1005A-2005A

Model _____

NOTE: Primary/Secondary plumbing is mandatory for proper operation.

CLEARANCES (in.)

| | Front | Rear | Right | Left | Top | Floor | Vent |
|--------------------------|-------|------|-------|------|-----|-------|------|
| Certified Minimum | 24 | 12 | 1 | 1 | 0 | 0 | 1 |
| Minimum Service | 24 | 36 | 24 | 1 | 10 | N/A | N/A |



| Model | Amp Draw | |
|-------|----------|---------------|
| | Heater † | Accessories † |
| 1005A | 12** | 10 |
| 1505A | 12** | 14 |
| 2005A | 18** | 17 |

† Separate power connections are factory supplied and separate supply breakers must be field supplied.
 ** Current draw is for heater only
 (Supply breaker must have delayed trip).

| Model (P-) | MBTUH | | Dimensions (in) | | | | | | | | | | | Ship Weight (Lbs.) | |
|------------|-------|--------|-----------------|----|---------|--------|--------|----------|---------|--------|---------|--------|--------|--------------------|------|
| | Input | Output | B Height | D | E | F | G* NPT | K Flue Ø | L | M | N C/A Ø | P | R | | Y |
| 1005A | 999 | 969 | 55-1/8 | 45 | 47-1/8 | 36-1/2 | 1-1/4 | 6 | 40-1/16 | 11-1/2 | 6 | 47-1/8 | 8-1/16 | 6-1/16 | 1065 |
| 1505A | 1500 | 1455 | 67-1/8 | 57 | 59-1/16 | 38-1/2 | 1-1/4 | 8 | 52-1/16 | 12-5/8 | 8 | 59-1/8 | 8-3/16 | 6-1/16 | 1234 |
| 2005A | 1999 | 1939 | 81-1/8 | 71 | 71-3/16 | 38-1/2 | 2 | 8 | 64-1/16 | 12-5/8 | 8 | 73-1/8 | 8-3/16 | 6-1/4 | 1461 |

Note: Ratings shown are for elevations up to 2,000 feet. For installations at elevations above 2,000 feet, please consult the factory for additional instructions.

* For Propane Gas, all models are 1 NPT