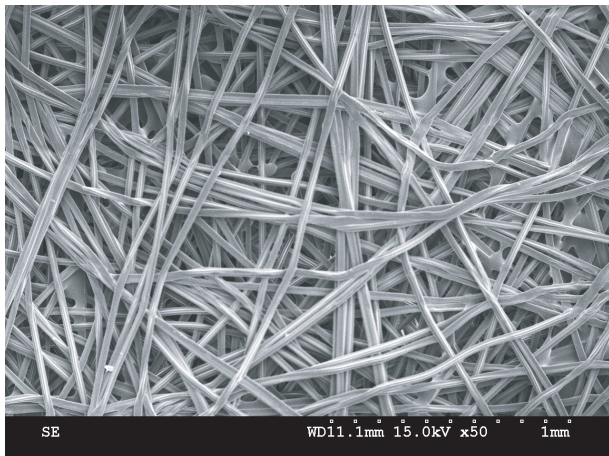
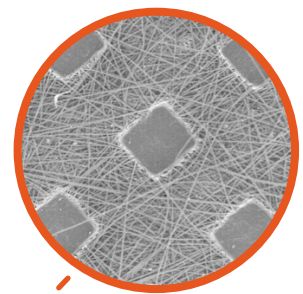


DON'T GIVE UP
20%

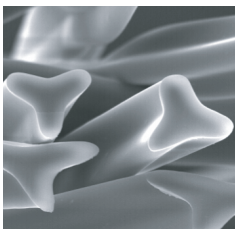
Why accept 100 sq. ft. of effective filtration area in your cartridge when you're paying for 125 sq. ft.?



REEMAY FILTRATION MEDIA

Benefits of Trilobal Fiber Flat Bonding

Flat bonding of Reemay's unique trilobal fibers allows 100% use of the highly uniform media for filtration. It also allows for easier release of trapped dirt for superior cleanability.

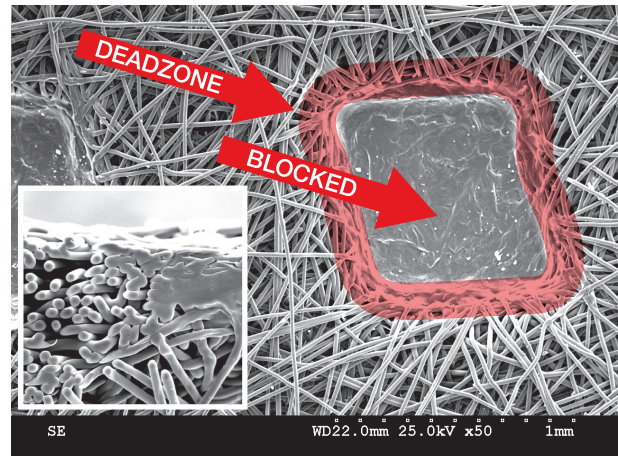


Reemay Trilobal Shape Is More Efficient



Reemay trilobal fibers deliver 21-40% greater effective

"dirt trapping" surface area when compared to competing products. The trilobal shape also helps catch particles, increasing efficiency without the pressure drop penalty, meaning less filter cleaning.



POINT-BOND MEDIA

Drawbacks of Point Bonding

Point-bonding reduces initial filtration area by blocking 20% – 25% of the media. It also creates an expanding "deadzone" around the bond that quickly clogs and will no longer trap new dirt due to poor cleanability.

Reemay Filtration Media, proven in the field and lab to deliver:

- Greater dirt-holding capacity
- Better cleanability
- More time between cleaning
- Sparkling clear water
- Less filter maintenance

Unicel®



MADE IN THE USA
Always Has. Always Will.

unicelfilters.com

DON'T BE FOOLED BY IMITATIONS. INSIST ON UNICEL.

Unicel Cartridges with Reemay's Balanced,
Trilobal Design Perform Better

LESS MAINTENANCE

Lasts 2.5 times longer between cleanings than competitive medias

LOW PRESSURE DROP

Filters efficiently while maintaining pressure

DURABILITY

Low fiber shed and stiffer pleating

LONGER LIFE

Fewer filters necessary over time



Reemay media is engineered with continuous Trilobal fibers and no binders

Unicel[®]
FILTER CARTRIDGES

MADE WITH
 **REEMAY**[®]
FILTRATION FABRIC

unicelfilters.com