

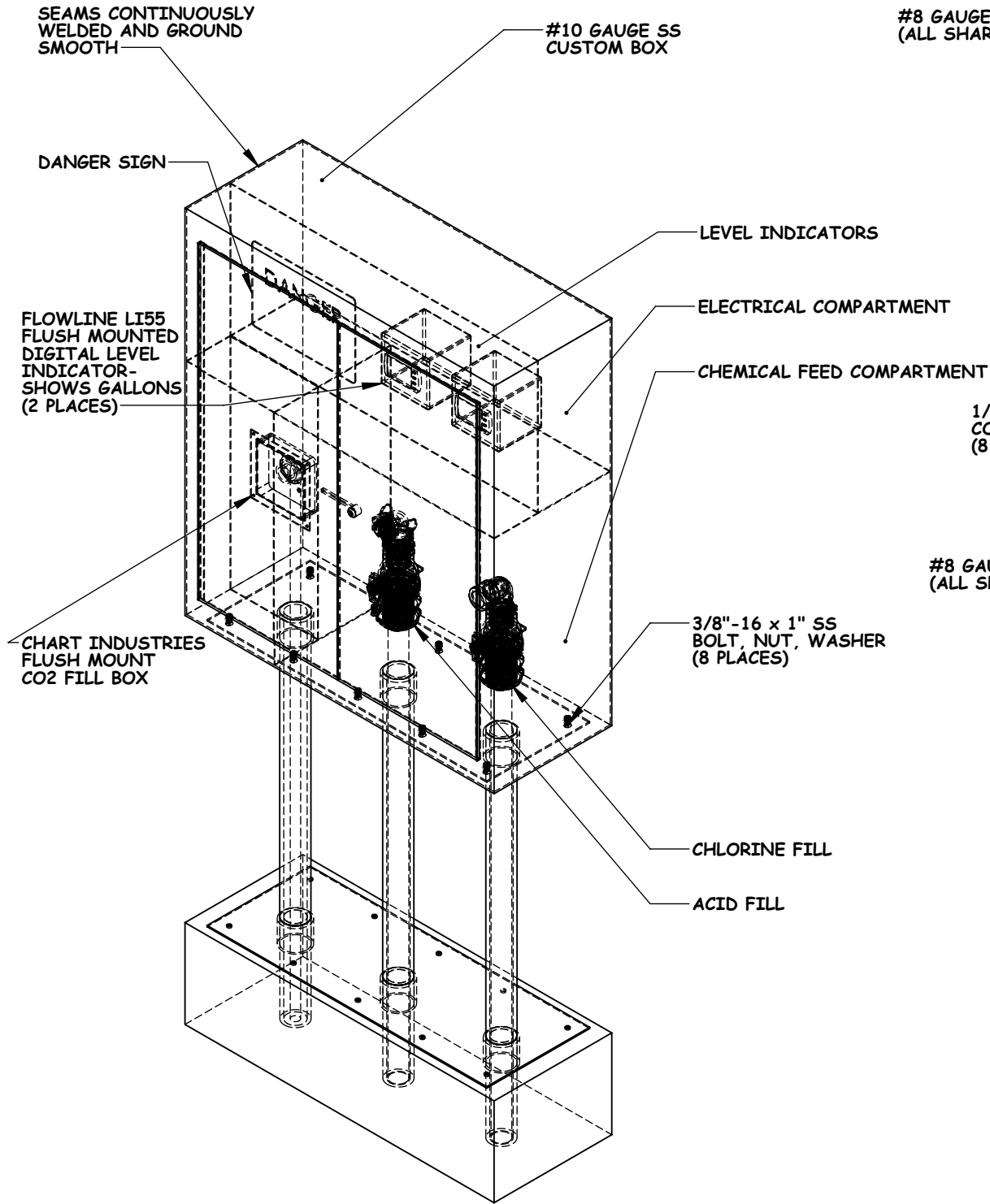
OUTDOOR FILL BOX TECHNICAL SHEET:

D

C

B

A



#8 GAUGE GALVANIZED FLAT PLATE (ALL SHARP EDGES REMOVED)

MOUNTING BOLTS TO BOX BOTTOM (8 PLACES)
3/8"-16 x 1" SS NUT, WASHER, BOLT

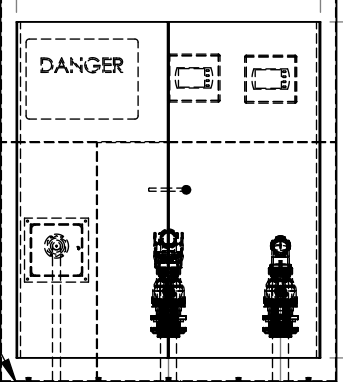
3" SS THREADED 150 LBS FLANGE WELDED TO PLATE
1/2"SS x 5 1/2" CONCRETE ANCHORS (8 PLACES)

#8 GAUGE GALVANIZED FLAT PLATE (ALL SHARP EDGES REMOVED)

3" SS THREADED 150 LBS FLANGE WELDED TO PLATE

BOX MOUNTS TO STAND

42"
38"

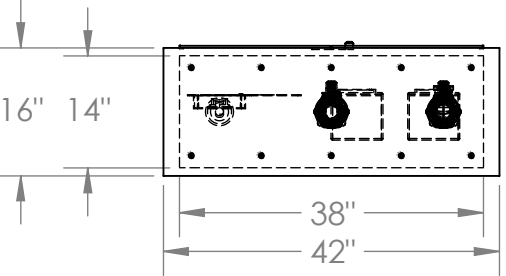


36"

12"

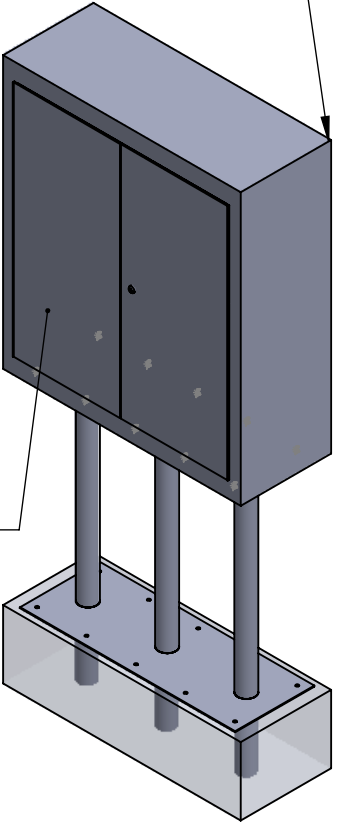
38"

PIPE SUPPORT EXTENDS INTO CONCRETE DECK FOR ADDED SUPPORT (FIELD VERIFY)



#12 GAUGE TYPE 316L SS DUAL ACCESS KEY LOCKABLE SS DOOR, FLUSH HINGE

GROUNDING STUD ON BODY; BONDING PROVISION ON COVER OR DOOR



PROPRIETARY AND CONFIDENTIAL
THE INFORMATION CONTAINED IN THIS DRAWING IS THE SOLE PROPERTY OF WATERLINE TECHNOLOGIES. ANY REPRODUCTION IN PART OR AS A WHOLE WITHOUT THE WRITTEN PERMISSION OF WATERLINE TECHNOLOGIES IS PROHIBITED.

		UNLESS OTHERWISE SPECIFIED:		NAME	DATE	OUTDOOR FILL BOX TECHNICAL SHEET		
		DIMENSIONS ARE IN INCHES TOLERANCES: FRACTIONAL ± ANGULAR: MACH ± BEND ± TWO PLACE DECIMAL ± THREE PLACE DECIMAL ±	DRAWN	SS	5/6/16	TITLE: AVAILABLE AT WTI TEL:(714)564-9100		
			CHECKED					
			ENG APPR.					
			MFG APPR.					
		INTERPRET GEOMETRIC TOLERANCING PER:	Q.A.					
		MATERIAL	COMMENTS:			SIZE	DWG. NO.	REV
NEXT ASSY	USED ON	FINISH				B	Outdoor Fill Box Tech Sheet A	
APPLICATION		DO NOT SCALE DRAWING				SCALE: 1:24	WEIGHT:	SHEET 1 OF 1

D

C

B

A